

SPATIO-TEMPORAL DATA ANALYSIS

Environmental data and applications have some peculiar features that make them distinct from the typical application in applied computer science. During recent years, this has led to the emergence of *Environmental Informatics* or *Enviromatics* (Environmental Information and Decision Support Systems). This is a novel field of Applied Informatics which is concerned with the application of computer science techniques to environmental problems. The same methodological and conceptual framework is shared by *Computational Sustainability*: “an interdisciplinary field that aims to apply techniques from computer science, information science, operations research, applied mathematics, and statistics for balancing environmental, economic, and societal needs for sustainable development”. The ultimate aim of these new and evolving areas of modern research is to develop computational and mathematical models to support decision making in challenging real world problems denoted by the often misused or vaguely defined concept of “sustainability”.

The colloquium will provide cutting-edge data analysis and modeling tools for a variety of practical applications by presenting concepts, algorithms, and case studies related to environmental problems. Attendees can expect a series of presentations on spatio-temporal data organization, analysis, modelling.

The colloquium will be useful for beginning users as well as advanced researchers.

Contacts

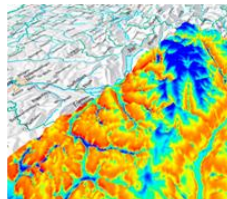
Antonino Marvuglia – Cork Constraint Computation Centre (4C), University College Cork
a.marvuglia@4c.ucc.ie

Mikhail Kanevski – Institute of Geomatics and Analysis of Risk (IGAR), University of Lausanne
mikhail.kanevski@unil.ch

Beniamino Murgante – Laboratory of Urban and Territorial Systems (LISUT), University of Basilicata
beniamino.murgante@unibas.it



Cork Constraint Computation Centre (4C)
University College Cork
Western Gateway Building, Cork, Ireland
Phone: +353 21 4205962
Website: www.4c.ucc.ie



Institute of Geomatics and Risk Analysis (IGAR)
University of Lausanne
Amhipôle - CH-1015 Lausanne - Switzerland
Phone: +41 21 692 35 30
Website: <http://www.unil.ch/igar>



Laboratorio di Ingegneria dei Sistemi Urbani e Territoriali (LISUT)
University of Basilicata
viale dell'Ateneo Lucano 10
85100 - Potenza
Phone: +39 0971 205125
Website: <http://www.lisut.org>



S4 ENVISA 2010
21-22 June 2010, Cork, Ireland

Colloquium on Spatio-Temporal Data Analysis



University College Cork (UCC)
Western Gateway Building
Western Road
Room 1.07

For further information about registration:
Website: <http://www.4c.ucc.ie/colloquium2010>
Email: colloquium2010@4c.ucc.ie

Department of Computer Science
Cork Constraint Computation Centre

June 21st 2010

- 09,15 **Eugene Freuder** – Director of Cork Constraint Computation Centre (4C);
Arnaud Banos – Executive secretary of S4:
Greetings, presentation of the international research network S4 and introduction to the colloquium
- 09,30 **Carla Gomes** (*Keynote speaker*) – Institute for Computational Sustainability (ICS), Cornell University, U.S.A.
Computational Sustainability: Computational Methods for a Sustainable Environment, Economy, and Society
- 10,30 **Mikhail Kanevski** – Institute of Geomatics and Risk Analysis (IGAR), University of Lausanne, Switzerland
Machine learning and geostatistics for environmental data. Review of problems and Corresponding models
- 11,00 **Vasily Demyanov** – Heriot-Watt Institute, Edinburgh, U.K.
Uncertainty Quantification of geospatial models: Bayesian statistics and Machine learning
- 11,30 **Vadim Timonin** – Institute of Geomatics and Risk Analysis (IGAR), University of Lausanne, Switzerland
Analysis and treatment of geospatial data using Machine Learning Office
- 12,00 **Michele Volpi** – Institute of Geomatics and Risk Analysis (IGAR), University of Lausanne, Switzerland
Active learning of remote sensing images
- 12,30 *LUNCH*
- 14,00 **Paul Harris** – National Centre for Geocomputation (NCG), National University of Ireland, Maynooth, Ireland
Developing a Statistical Methodology to Improve Classification and Mapping of Seabed Type from Deep Water Multi-Beam Echo Sounder (MBES) Data
- 14,30 **Tabbasum Natz** – Cork Constraint Computation Centre (4C), University College Cork, Ireland

Managing Marine Data: Irish Case Study

- 15,00 **Paul Leahy** – Department of Civil Engineering, University College Cork, Ireland
Hybrid ANN model for prediction of river levels over time
- 15,30 **Loris Foresti** – Institute of Geomatics and Risk Analysis (IGAR), University of Lausanne, Switzerland
GeoKernels: application of kernel based methods for geo- and environmental sciences
- 16,00 **James Haworth, Tao Cheng, Jaiqiu Wang** – Dept. of Civil, Environmental & Geomatics Engineering, University College London, U.K.
Kernel Based approach for Space-time analysis

June 22nd 2010

- 09,30 **Barry O'Sullivan** – Cork Constraint Computation Centre (4C), University College Cork, Ireland
Enda Keane – Treemetrics, Cork, Ireland
Biodiversity prediction in a forest environment in Ireland
- 10,00 **Ioannis Dokas** – Cork Constraint Computation Centre (4C), University College Cork, Ireland
The project SCEWA - Supporting the Concept of Early Warning Analysis: A short description
- 10,30 **Gordon Rios, Antonino Marvuglia** – Cork Constraint Computation Centre (4C), University College Cork, Ireland
Bayesian Networks for time series forecasting
- 11,00 **Jaiqiu Wang, Tao Cheng** – Dept. of Civil, Environmental & Geomatics Engineering, University College London, U.K.
STARIMA for Traffic Flow Prediction
- 11,30 **Christian Kaiser** – National Centre for Geocomputation (NCG), National University of Ireland, Maynooth, Ireland
Analysis, simulations and geo-visualization of socio-economic and demographic data
- 12,00 **Beniamino Murgante, Grazia Scardaccione, Francesco Scorza, Giuseppe Las Casas** –

Laboratory of Engineering of Urban and Territorial Systems (LISUT), University of Basilicata, Italy
Spatial Autocorrelation Analysis for the Evaluation of Migration Flows: The Italian Case

12,30 *LUNCH*

14,00 **Alexei Pozdnoukhov, Fergal Walsh** – National Centre for Geocomputation (NCG), National University of Ireland, Maynooth, Ireland
Exploratory analysis for human activity pattern identification in geospatial data streams

14,30 **Vittorio Paola** – Presidenza Regione Sicilia & Sicilia@servizi, Italy
Decision support systems for complex environmental data base: de-normalization and geostatistics assessments methods

15,00 **Short presentations of different case studies. Practices. General discussion. Conclusions.**

19,30 *SOCIAL DINNER*

The colloquium is organized by the working group ENVISA (Environmental Issues in Spatial Analysis) under the umbrella of the international research network named S4 (Spatial Simulations for Social Sciences).

It is hosted by the Cork Constraint Computation Centre (University College Cork, Ireland) as part of the project CREEDS (Constraint Reasoning Extended to Enhance Decision Support) supported by European Commission, Marie Curie Transfer Of Knowledge (TOK) scheme.



<http://s4.parisgeo.cnrs.fr/index.htm>



CREEDS

<http://4c.ucc.ie/creeds>