

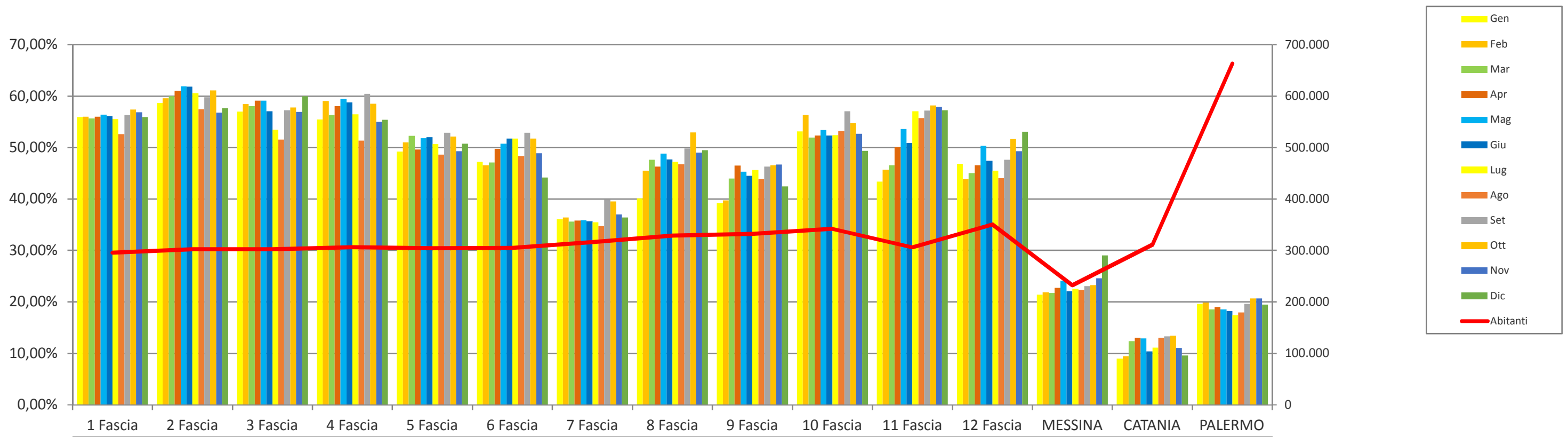
percentuale media RD 2019

40,04%



REGIONE SICILIANA
DIPARTIMENTO REGIONALE
DELL'ACQUA E DEI RIFIUTI

RD 2019 per zone demografiche



Classi di popolazione	Abitanti	Gen	Feb	Mar	Apr	Mag	Giu	Lug	Ago	Set	Ott	Nov	Dic	
1 Fascia (da 0 a 3.500 ab.)	295.697	55,95%	55,96%	55,68%	55,98%	56,36%	56,09%	55,52%	52,59%	56,35%	57,38%	56,86%	55,95%	
2 Fascia (da 3.500 a 6.000ab.)	301.996	58,67%	59,57%	59,98%	61,03%	61,92%	61,85%	60,59%	57,45%	59,81%	61,08%	56,78%	57,65%	
3 Fascia (da 6.000 a 8.500ab.)	302.096	57,00%	58,44%	58,06%	59,09%	59,11%	57,05%	53,47%	51,54%	57,22%	57,78%	56,94%	60,00%	
4 Fascia (da 8.500 a 11.500ab.)	306.606	55,44%	59,05%	56,29%	58,03%	59,44%	58,77%	56,45%	51,38%	60,44%	58,50%	54,98%	55,38%	
5 Fascia (da 11.500 a 14.500ab.)	304.616	49,22%	50,99%	52,28%	49,59%	51,82%	52,04%	50,70%	48,62%	52,86%	52,17%	49,28%	50,72%	
6 Fascia (da 14.500 a 22.000ab.)	305.035	47,20%	46,56%	47,10%	49,78%	50,74%	51,76%	51,73%	48,36%	52,85%	51,74%	48,86%	44,20%	
7 Fascia (da 22.000 a 27.000ab.)	316.270	36,06%	36,37%	35,62%	35,79%	35,90%	35,65%	35,45%	34,77%	39,87%	39,53%	37,00%	36,43%	
8 Fascia (da 27.000 a 32.000ab.)	328.816	40,13%	45,48%	47,60%	46,31%	48,80%	47,66%	47,23%	46,75%	49,82%	52,97%	49,04%	49,51%	
9 Fascia (da 32.000 a 40.000ab.)	331.942	39,21%	39,75%	43,98%	46,48%	45,31%	44,49%	45,65%	43,93%	46,27%	46,58%	46,72%	42,44%	
10 Fascia (da 40.000 a 54.000ab.)	341.934	53,11%	56,29%	51,96%	52,33%	53,39%	52,33%	52,38%	53,23%	57,03%	54,76%	52,66%	49,33%	
11 Fascia (da 54.000 a 70.000ab.)	306.305	43,39%	45,73%	46,55%	50,09%	53,59%	50,85%	57,05%	55,75%	57,18%	58,19%	57,95%	57,23%	
12 Fascia (da 70.000 a 130.000ab.)	351.038	46,85%	43,90%	45,04%	46,59%	50,38%	47,42%	45,48%	44,06%	47,65%	51,67%	49,28%	53,04%	
MESSINA	MESSINA	232.555	21,42%	21,84%	21,75%	22,76%	24,10%	22,04%	22,56%	22,30%	23,07%	23,24%	24,60%	29,02%
CATANIA	CATANIA	311.584	8,99%	9,43%	12,37%	13,02%	12,92%	10,34%	11,13%	13,03%	13,32%	13,42%	11,06%	9,59%
PALERMO	PALERMO	663.401	19,60%	19,84%	18,52%	19,02%	18,56%	18,21%	17,44%	17,93%	19,58%	20,67%	20,68%	19,44%