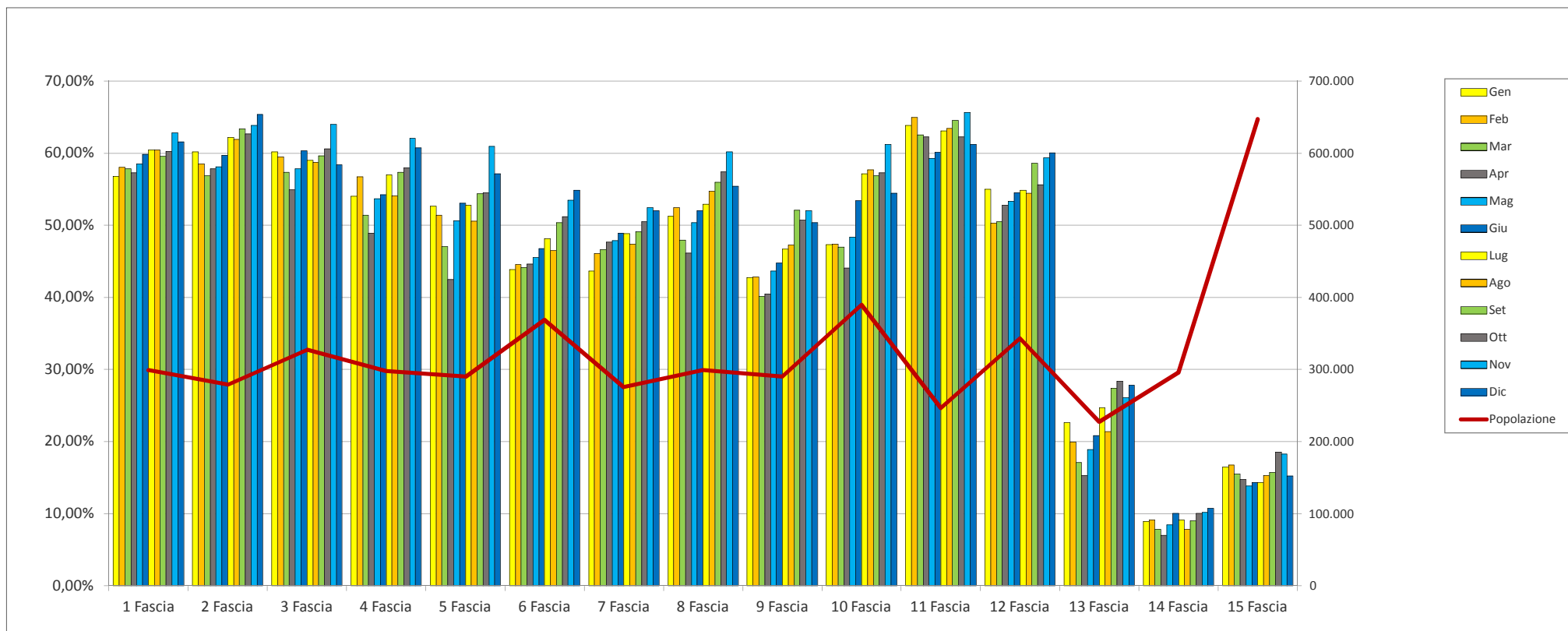


% media RD 2020

42,22%



REGIONE SICILIANA
DIPARTIMENTO REGIONALE
DELL'ACQUA E DEI RIFIUTI



Classi di popolazione	Popolazione	Gen	Feb	Mar	Apr	Mag	Giu	Lug	Ago	Set	Ott	Nov	Dic
1 Fascia (da 0 a 3500 ab.)	298.744	56,79%	58,04%	57,83%	57,26%	58,54%	59,82%	60,45%	60,48%	59,53%	60,27%	62,82%	61,55%
2 Fascia (da 3501 a 6000 ab.)	278.836	60,19%	58,53%	56,85%	57,79%	58,14%	59,70%	62,20%	61,89%	63,36%	62,67%	63,87%	65,40%
3 Fascia (da 6001 a 8500 ab.)	327.189	60,18%	59,47%	57,38%	54,94%	57,82%	60,31%	58,99%	58,74%	59,64%	60,60%	63,98%	58,40%
4 Fascia (da 8501 a 11500 ab.)	297.437	54,04%	56,74%	51,36%	48,88%	53,65%	54,20%	57,00%	54,12%	57,33%	57,95%	62,08%	60,74%
5 Fascia (da 11501 a 14500 ab.)	289.746	52,65%	51,39%	47,03%	42,51%	50,64%	53,04%	52,78%	50,58%	54,40%	54,52%	60,96%	57,17%
6 Fascia (da 14501 a 22000 ab.)	368.982	43,85%	44,55%	44,14%	44,59%	45,54%	46,75%	48,14%	46,48%	50,39%	51,21%	53,50%	54,82%
7 Fascia (da 22001 a 27000 ab.)	275.402	43,63%	46,10%	46,61%	47,64%	47,88%	48,90%	48,85%	47,38%	49,12%	50,49%	52,46%	51,99%
8 Fascia (da 27001 a 32000 ab.)	298.777	51,23%	52,40%	47,97%	46,14%	50,36%	52,03%	52,90%	54,74%	55,97%	57,38%	60,17%	55,41%
9 Fascia (da 32001 a 40000 ab.)	289.798	42,72%	42,85%	40,12%	40,50%	43,65%	44,79%	46,67%	47,22%	52,09%	50,68%	52,01%	50,33%
10 Fascia (da 40001 a 54000 ab.)	389.622	47,29%	47,42%	46,97%	44,07%	48,33%	53,40%	57,13%	57,69%	56,89%	57,26%	61,19%	54,45%
11 Fascia (da 54001 a 70000 ab.)	246.251	63,81%	64,93%	62,55%	62,26%	59,30%	60,12%	63,06%	63,41%	64,57%	62,23%	65,61%	61,21%
12 Fascia (da 70001 a 130000 ab.)	343.394	54,97%	50,31%	50,49%	52,77%	53,32%	54,48%	54,85%	54,46%	58,56%	55,64%	59,32%	60,04%
13 Fascia MESSINA	227.424	22,63%	19,97%	17,08%	15,34%	18,88%	20,84%	24,73%	21,41%	27,44%	28,40%	26,12%	27,83%
14 Fascia CATANIA	296.266	8,96%	9,17%	7,83%	6,97%	8,44%	10,07%	9,18%	7,81%	9,01%	10,07%	10,22%	10,73%
15 Fascia PALERMO	647.422	16,46%	16,77%	15,48%	14,76%	13,85%	14,35%	14,37%	15,27%	15,73%	18,57%	18,29%	15,21%