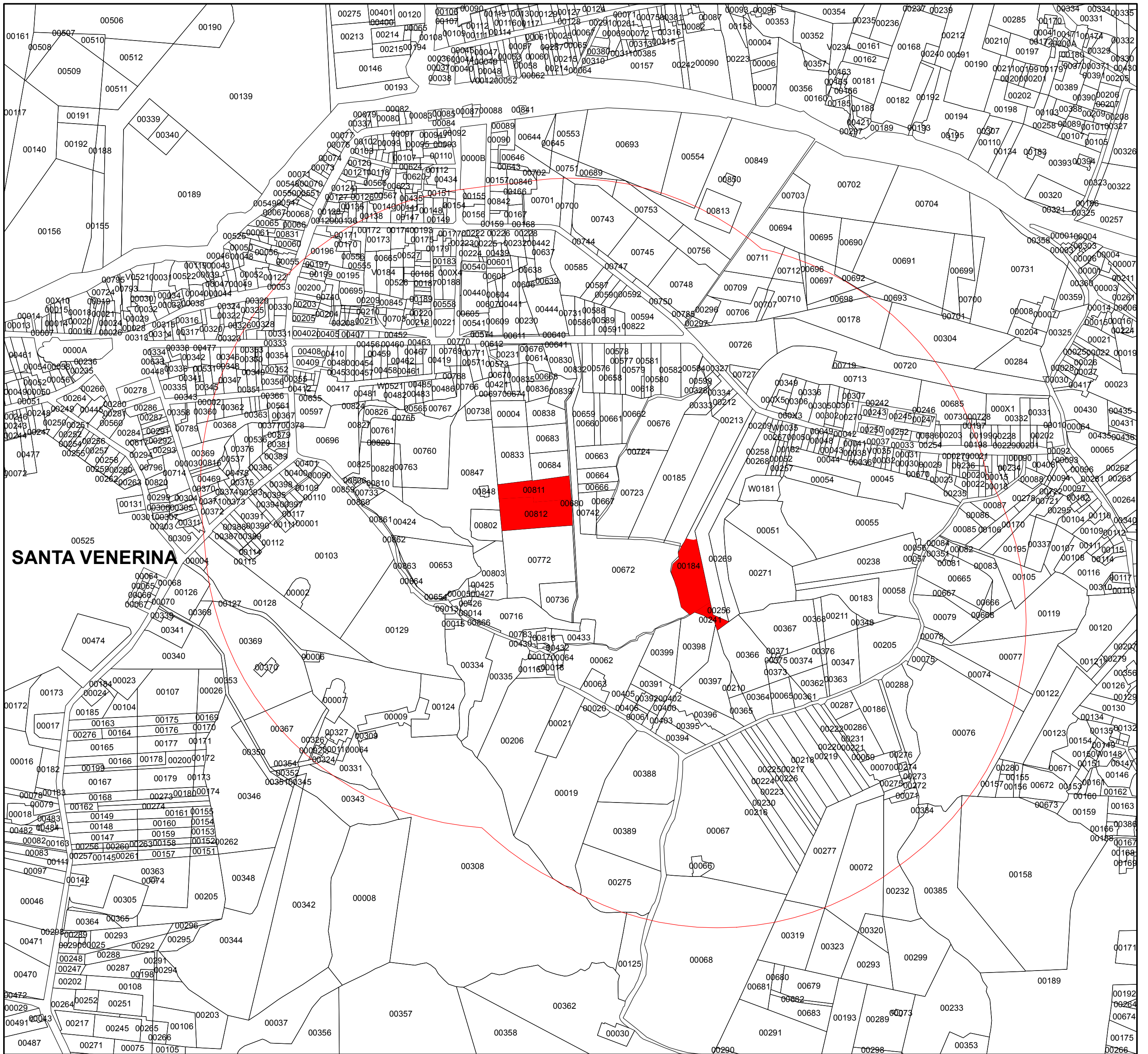


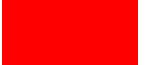


Delimitazione zone contaminate da Sharka Comune Santa Venerina (CT) - Fogli 23 - 26



 Regione Siciliana
 Assessorato regionale dell'Agricoltura, dello Sviluppo rurale
 e della Pesca mediterranea
 Dipartimento Regionale dell'Agricoltura

Legenda

-  Zona tampone
-  Aree Contaminate

